



# Illegal Dumping - Everyone's Problem



Haulers are Not Designed  
to Collect Loose Waste

# Illegal Dump Sites

Variety of materials that a traditional municipal hauler cannot collect

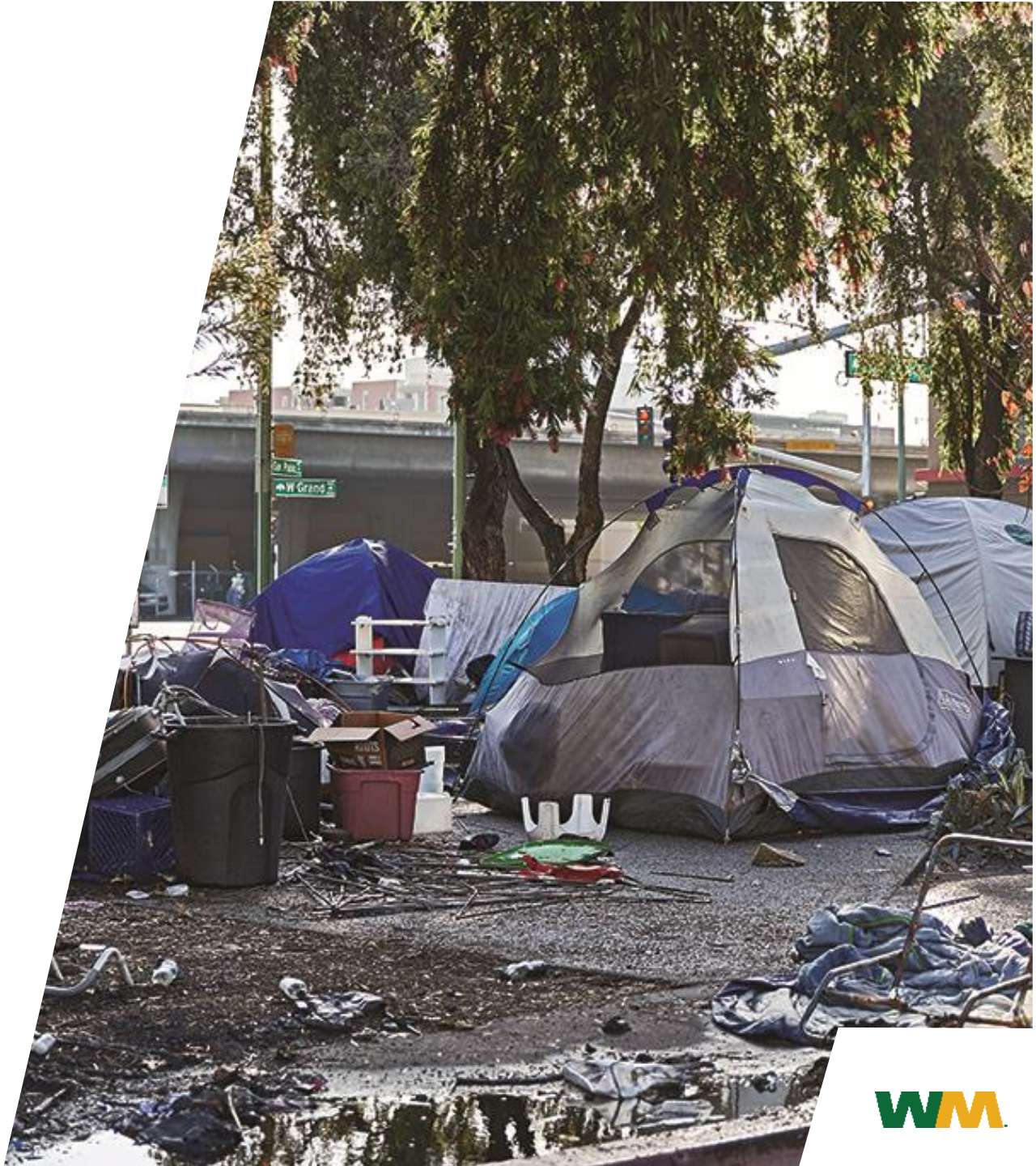
- **Construction Debris**
  - We see everything from concrete blocks to piles of stones.
  - Items too heavy to lift. Need specialized equipment like crane or “Yellow Iron” Wheel Loader
- **Medical Waste**
  - Needles are the primary medical waste found at illegal dump sites
  - Drivers and helpers not prepared for medical waste, nor do they have the proper storage or waste receptacles.
- **Hazardous Materials**
  - Paint, human waste, fertilizer, pesticides, lights and electronics
  - Drivers not prepared to handle material nor do they have a separate location to store items for disposal



# Illegal Dump Sites

Routinely Near Homeless Encampments

- A hauler needs assistance when working near an encampment
- Frequent arguments about personal belongings
- Dangerous materials scattered about



# Haulers Are Designed For Collecting Containerized Waste

- Our equipment is designed to collect waste in carts, bins and roll-off containers. Haulers don't have the manpower or infrastructure to collect waste that is not containerized.
- Bulky waste pickups allow for self-contained large objects like tires, mattresses, appliances, electronics but smaller objects must be bundled, bagged or boxed.



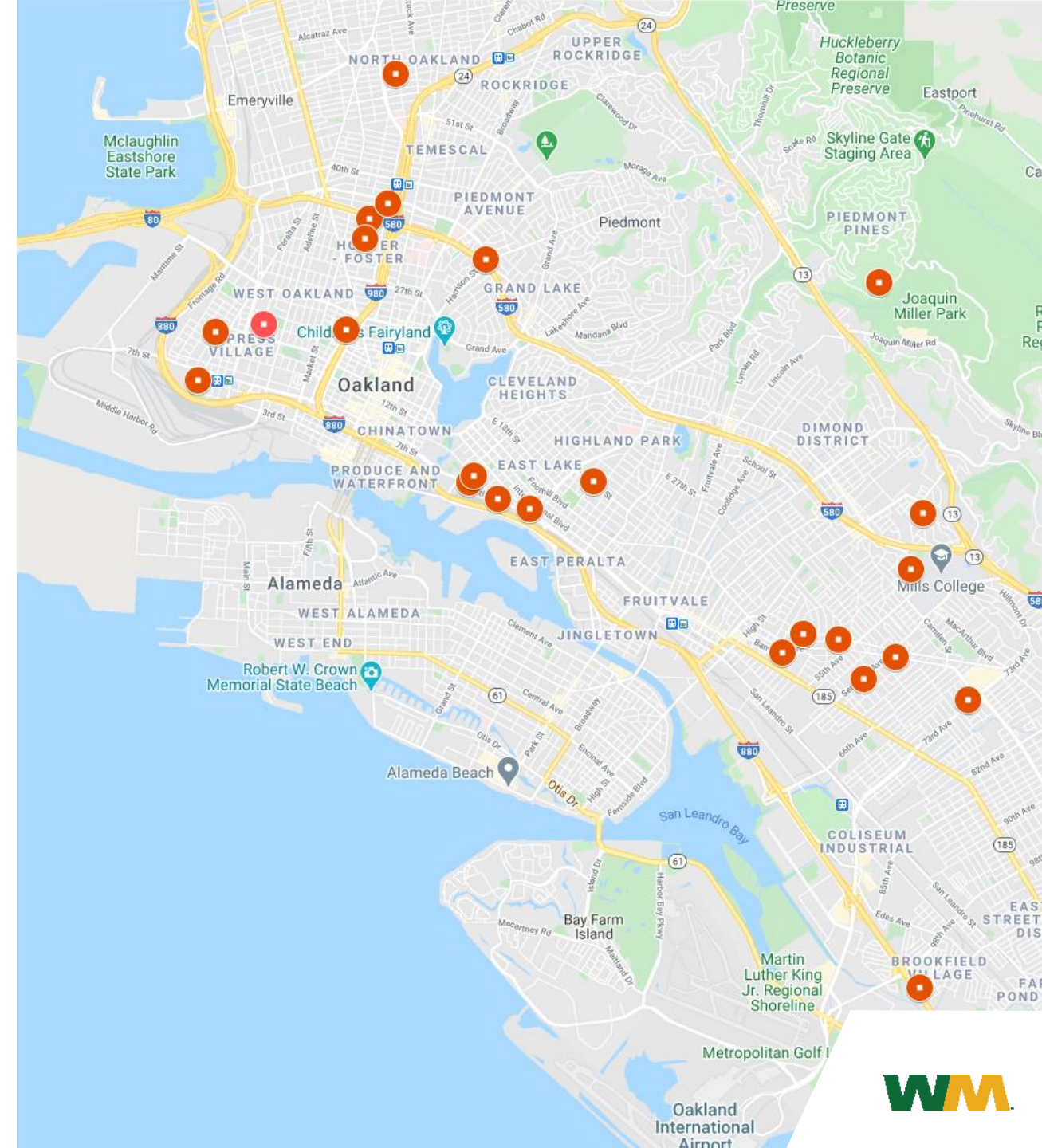


# Illegal Dumping Pickups “By Appointment” Not Working

# Challenges of the “Appointment System”

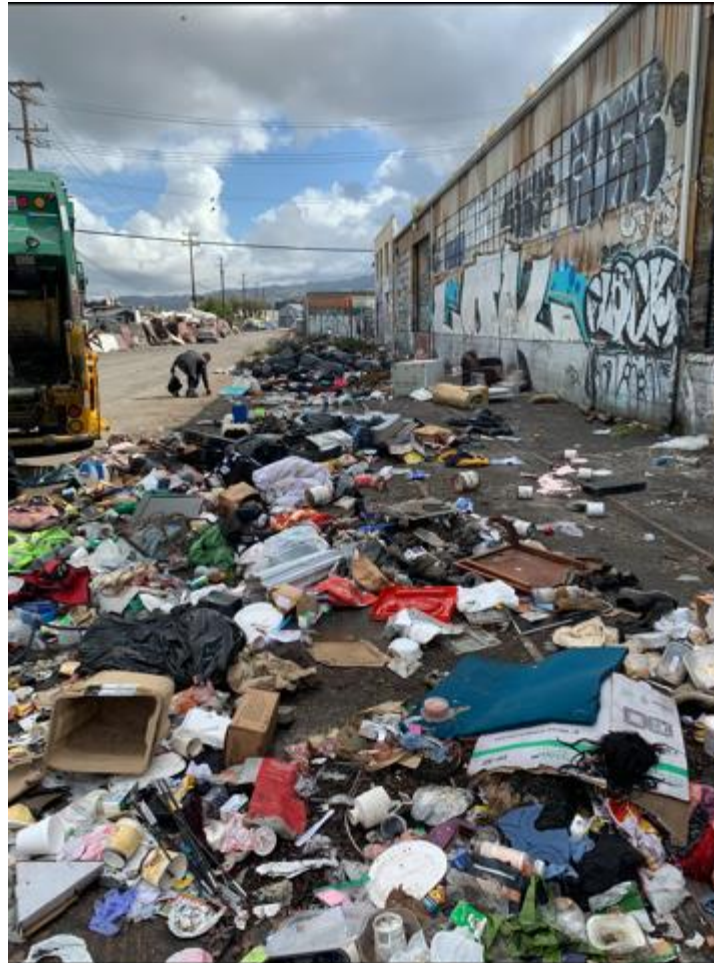
Using resident tip lines and apps to map illegal pick-ups is not a sustainable solution, nor does it lead to cleaner streets

- Pickup locations too spread-out costing valuable travel time between stops
- Time frame between resident report and notice getting to hauler takes too long resulting in new materials being dumped at the site
  - This leads to situations where hauler responds to a site but cannot entirely clean up because other material (Haz Mat, construction) is there.
  - Also, leads to resident frustration because identified site could be a block away from another site which hauler cannot clean because they are on a schedule.

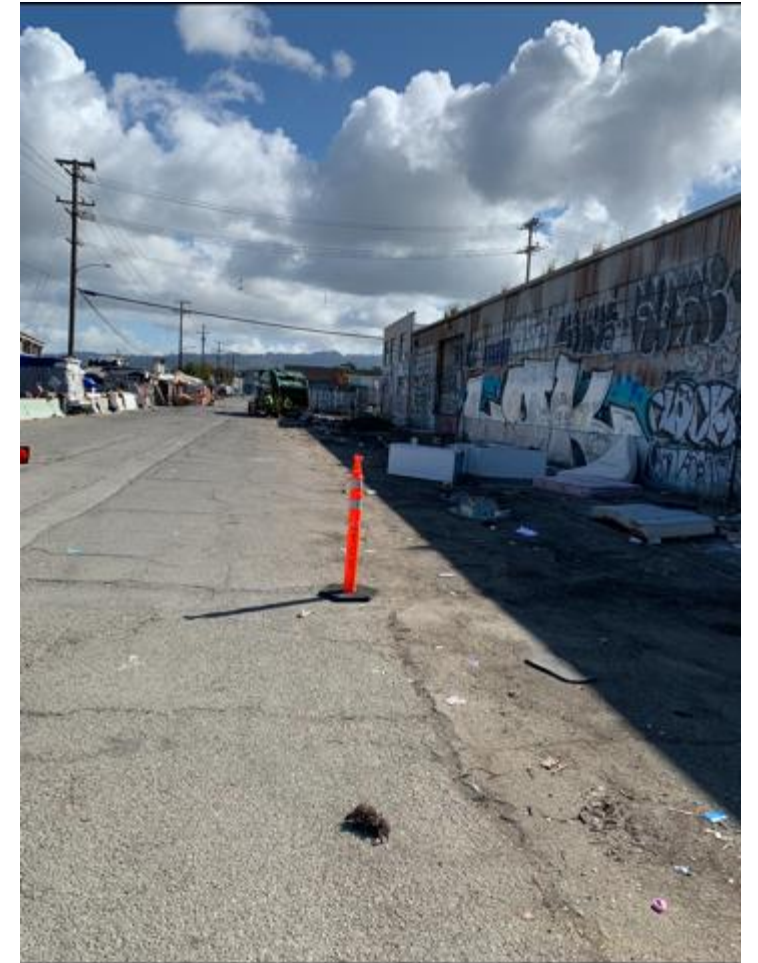


# Sweeping Neighborhoods Works

- Programs that call for sweeping entire neighborhoods daily work better than “appointment-based” pickups
- Can ensure all equipment available at once as hauler works with jurisdiction to ensure all materials can be collected
- You can have public works, haz mat and medical waste handlers at location to help collect materials



BEFORE



AFTER



# Sweeping Neighborhoods Works

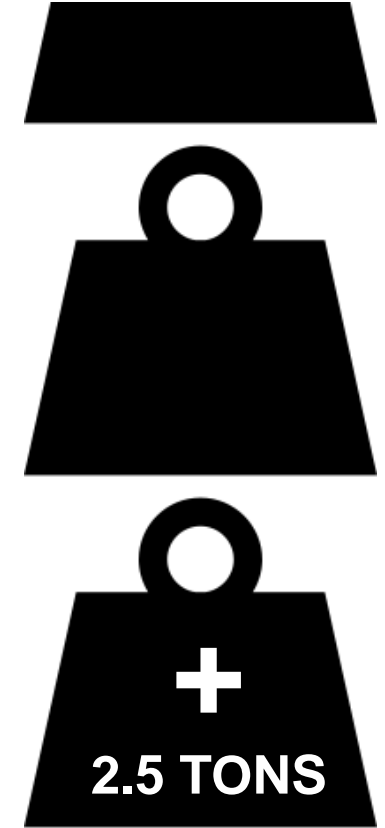
- Pilot program in Oakland resulted on average of about 2.5 more tons per truck, per day more than the appointment system
  - Picked up as high as 70 tons with 4 trucks.



BEFORE



AFTER



# Education, Eradication, Enforcement

- **Education is key.**
  - The more people are aware of the issue and the resources available, the more they can help solve the problem
- **No matter how many resources a city dedicates towards cleaning a site, scofflaws will continue to dump if there are no repercussions.**
  - WM cleans debris at the same sites every week.
- **Property owners, including public entities, need to be held responsible for keeping their properties clean.**
- **Enforcement at known sites needs to be enhanced**
- **Mandatory service ordinances need to be enforced to ensure businesses and residents are not using public trash cans as personal dumping grounds.**
- **Illegal haulers need to be restricted**



# Questions / Answers

