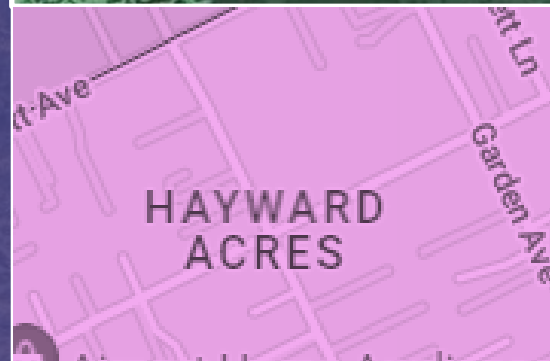
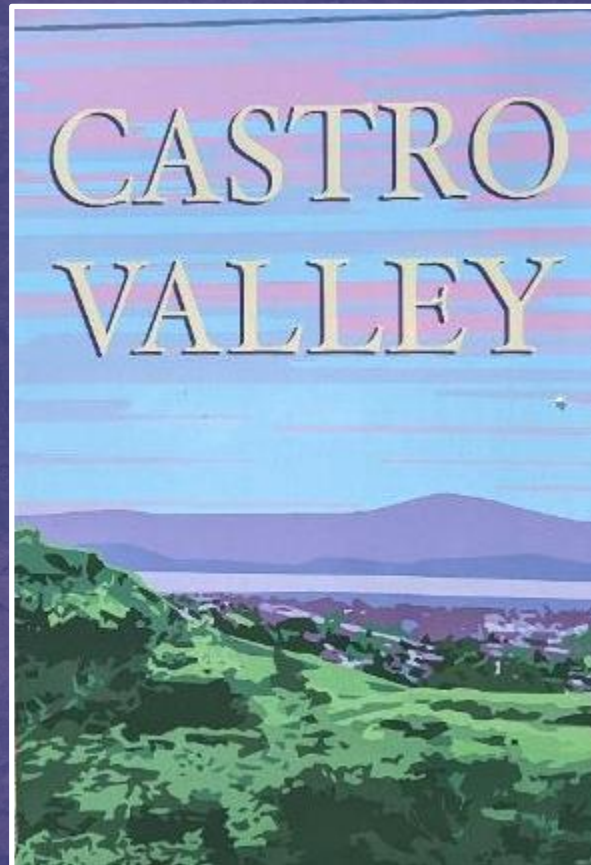


Alameda County EJ Element

ACHCC EJ Bucket Meeting #9



September 15, 2022



Welcome & Agenda Review

Agenda

1. Welcome & Agenda Review
 - Small-group icebreaker
2. Report-out: August EJ Community Workshop
 - EJ website re-vamp
3. Guest Speaker Leigha Schmidt: The City of Hayward's EJ Element
4. Next Steps/Announcements/Adjourn



Report-out: August EJ Community Workshop



EJ Community Meeting #2

- August 25, 6:30-8:30pm via Zoom
- Concurrent Spanish translation with small, facilitated breakouts (including a Spanish-language breakout)
- Presented, then discussed in 8 small groups:
 - Key EJ concerns we've heard from community and ACHCC, by "pillar"
 - Policy ideas from ACHCC
 - Additional policy priorities from community
- Used MURAL to collect ideas
- 94 individual participants, including facilitators
- Door prizes

Outreach



Attendees will be entered to win a Walmart Gift Card!


Please Join Us!

Thursday
August 25, 2022
6:30 - 8:30 pm

Environmental Justice

VIRTUAL COMMUNITY WORKSHOP #2

This interactive virtual meeting will be on Zoom. Join us by computer, tablet, or phone. Please use this QR code or Zoom link to register for this meeting.



<https://bit.ly/AlamedaEJWorkshop2>


Or, participate by phone:
(888) 788-0099

Meeting ID:
817 4391 6227

Please take the community survey to help us understand the environmental justice issues you care about most.



<https://bit.ly/EJSurvey-English>



For more information or to contact
www.acgov.org/cda/planning/generalplans/Env-Ju
Contact:
Alameda County Planning Department Phc



Environmental Justice to live, work, play and an environment.

¡Por Favor, Acompáñanos!

Los asistentes serán entrados para ganar una tarjeta de Walmart!

Jueves
25 de Agosto, 2022
6:30 - 8:30 pm

La Justicia Ambiental

REUNIÓN COMUNITARIA VIRTUAL #2

La Justicia Ambiental es el derecho básico de todas las personas a vivir, trabajar, jugar y aprender en un ambiente sano y limpio.

QUE ES EL PROYECTO?

El Condado de Alameda esta trabajando con el público para desarrollar políticas de Justicia Ambiental que prioricen a las comunidades de Ashland, Cherryland, Hayward Acres, y partes de San Lorenzo y Castro Valley.

OBJETIVO DE SEMINARIO #2

¡Tu voz importa! Este seminario interactivo explorará problemas y soluciones a:

- Reducir la contaminación
- Mejorar el acceso a alimentos saludables y recreación
- Promover hogares y vecindarios seguros
- Mejorar la participación cívica

[Seminario #1 Presentación y Grabación](#)

Por favor complete la encuesta comunitaria para ayudarnos a comprender los problemas de justicia ambiental que más le preocupan.



<https://bit.ly/EJSurvey-Spanish>

Para obtener más información visite:
www.acgov.org/cda/planning/generalplans/Env-Justice-of-General-Plan.htm
Contacto:
Departamento de Planificación del Condado de Alameda Teléfono: 510-670-5400




• TVHC Promotoras:

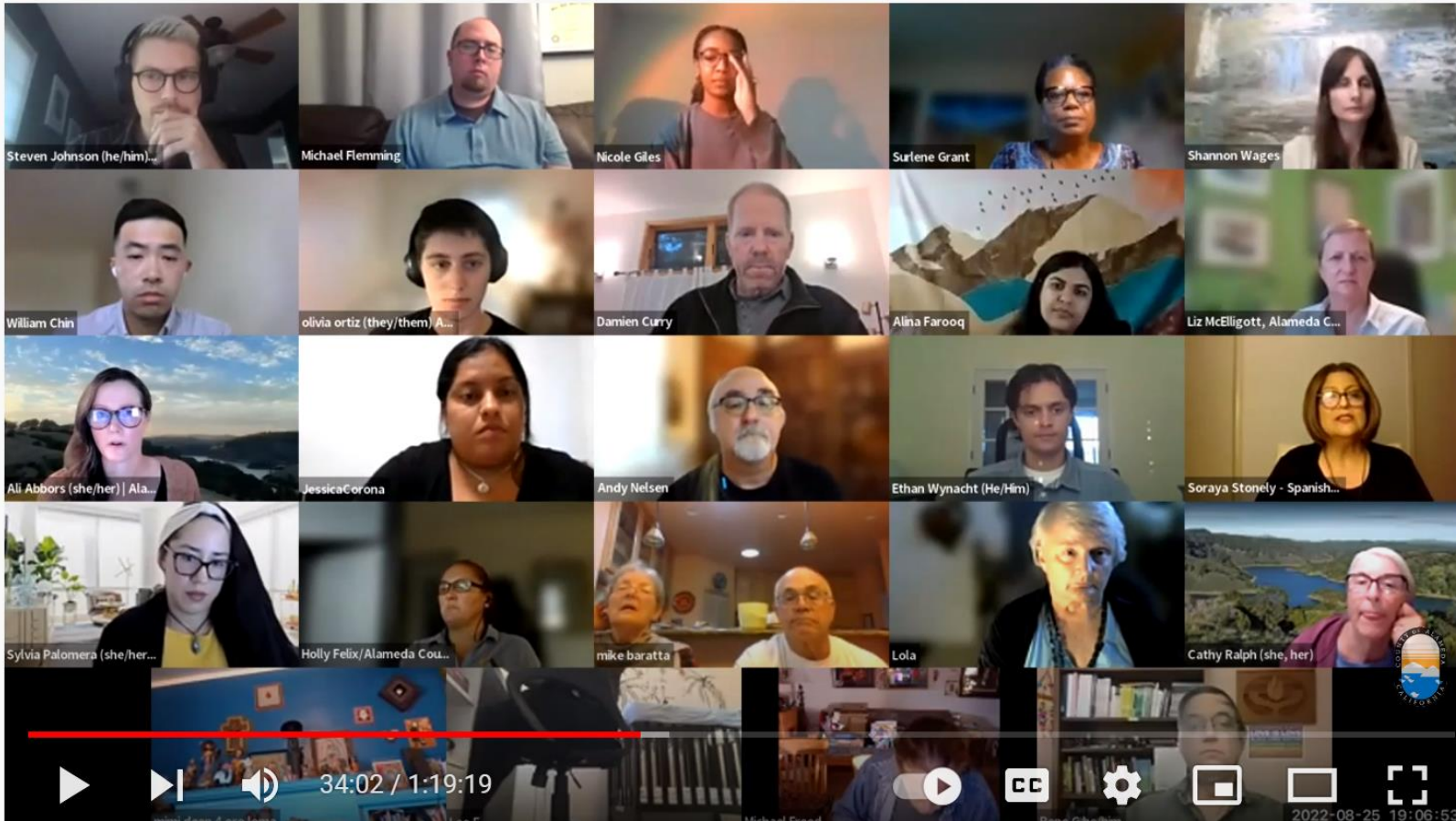
- Handed out 1000 bilingual paper flyers throughout Priority Communities
- Attended Davis Street Family Resource Center Health Fair 8/6
- Tabled on E. 14th

• Electronic outreach:

- County listserv
- ACHCC and MEV mailing lists
- Supervisors' newsletters
- CCA and ACA
- Library electronic kiosk display
- SLZ Unified text outreach
- Castro Valley Forum e-Calendar
- Partner social media shares via Facebook, Nextdoor

Zoom facilitation lessons for next time:

- Breakout size: too small or too large can be a barrier to participation
- Need more Spanish-language facilitators and breakouts
- Look for alternatives to concurrent translation that won't exclude call-ins
- MURALs: helpful to screenshare and have designated note-taker in case participants don't want to input directly



Community Policy Priorities* (major themes)

*Preliminary review of
input, not exhaustive

- Invest in **sidewalks** for safer routes to school and work, more opportunities for physical activity, improved mobility for seniors/disabled
- Increase **access to public transportation**: improved bus routes, more bus stop seating, partnerships between County and transit for improved access to school and public facilities
- Support and protect access to **nearby, safe, accessible green spaces** for all residents (e.g. partnerships with schools for after-school use of grounds; incentives for developers to include green space/rooftop gardens; ADA access to parks and green space)
- **Increase/protect tree canopy cover** with tree protections, tree inventories, tree planting programs, urban greening master plan, etc.
- **Improve streetscape** with better lighting, pothole repair, biking infrastructure, speed bumps, stormwater bioswales

Community Policy Priorities* (major themes)

*Preliminary review of
input, not exhaustive

- Enable more **participation in County meetings**: standard universal translation, better publicity, improved transcripts and searchable archives, varied meetings times, hybrid meeting options, etc.
- Consider **options for MACs**: designated MAC seats for EJ census tracts; members elected not appointed; policies to encourage public participation
- Establish an “**Office of Unincorporated**”: consider a residency requirement for hiring; focus on accountability and community identity
- Establish an **Unincorporated Youth Commission** youth advisory body
- Improve/expand **opportunities for community engagement** by using digital engagement platforms, social media, sharing platforms
- **Educate community about engaging with Supervisors** to uplift priorities
- **Bridge the tech divide**: Provide free, public Wi-Fi, computer classes

Community Policy Priorities* (major themes)

*Preliminary review of
input, not exhaustive

- Adopt programs/ordinances to **make existing housing more energy/water efficient**
- **Protect renters** with proactive rental inspections, rental registry, rent stabilization, increased access to rental upgrades programs, etc.
- Support construction of more **tiny homes**, consider use of County land
- **Invest in mental health and homeless services** (e.g. non-police crisis intervention, local substance treatment and institutional care, prevention)
- Support establishment of **community resilience hubs**
- **Decrease trash in communities** with more public trash cans, neighborhood cleanups, sanitation stations, education
- Consider adding a **Sheriff's substation in Cherryland**

Community Policy Priorities* (major themes)

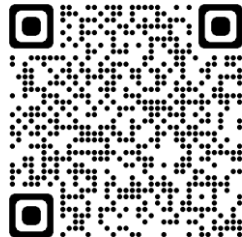
*Preliminary review of
input, not exhaustive

- Adopt a **Health-in-All policy**
- Increase **physical activity and educational opportunities for adults** like exercise classes (Zumba, tai chi, etc.), volunteer activities, informal meetups (biking, hiking), classes (English, parenting, gardening); partnerships with HARD, libraries, DSAL, schools, etc.
- Support/encourage construction of an **Eden Area swimming pool**
- Encourage **healthy corner stores** with more fruit/veggie options
- Encourage **home gardening/beekeeping/chicken-keeping** with classes, supportive zoning, urban ag incentive zones, gleaning programs
- Fund **daycare and after school programs** for low-income families
- **Commit to funding community programming permanently**, not just through grants

Reactions?

EJ Element Website Update

- Priority Community map
- Project timeline
- Survey results (coming soon)
- Community Workshop recordings, MURALS, PPTs and outreach materials
- ACHCC EJ Bucket PPTs, Agendas, and MURALS
- Recordings of other public meetings (e.g., MACs, USC)



<https://www.acgov.org/cda/planning/general-plans/Env-Justice-of-General-Plan>

Environmental Justice Element of the General Plan

[About](#)[Timeline](#)[Priority Communities](#)[Engagement](#)[Contact](#)

Engagement

Upcoming Meetings

No meetings are scheduled at this time. Please sign up for our email list, below, to receive periodic updates about the EJ Element, including community engagement opportunities.

Sign up for email list

Email Updates

To sign up for updates or to access your subscriber preferences, please enter your contact information below.

*Email Address

Community Survey

Alameda County conducted an electronic survey in spring and summer of 2022 to gather input about community concerns related to pollution, safe and sanitary housing, public facilities, health and physical activity, food access, and civic engagement. The survey results will be posted here once they are finalized.

Community Workshops

Meeting materials are linked below:

- [Community Workshop #1, May 19, 2022](#)
- [Community Workshop #2, August 25, 2022](#)
- Community Workshop #3, date TBD

Ashland Cherryland Healthy Communities Collaborative EJ Bucket

The Ashland Cherryland Healthy Communities Collaborative (ACHCC) is made up of representatives from County Agencies and local CBOs that provide services to the EJ Priority Communities of Ashland, Cherryland, Hayward Acres, San Lorenzo, and Castro Valley. Throughout 2022, the ACHCC "EJ Bucket" is meeting monthly to identify community needs and assets, co-create EJ policy recommendations, and provide feedback on specific needs for plan implementation. Meeting materials are posted below:

- [Meeting 1, January 2022](#)
- [Meeting 2, February 2022](#)
- [Meeting 3, March 2022](#)



**Guest Speaker
Leigha Schmidt:
The City of Hayward's
EJ Element**





Next Steps

4

Next Steps

- ACHCC Meeting #10 – October 20th
- Public Review Draft EJ Element – December
- Community Workshop #3 – Winter 2023



Member announcements?