

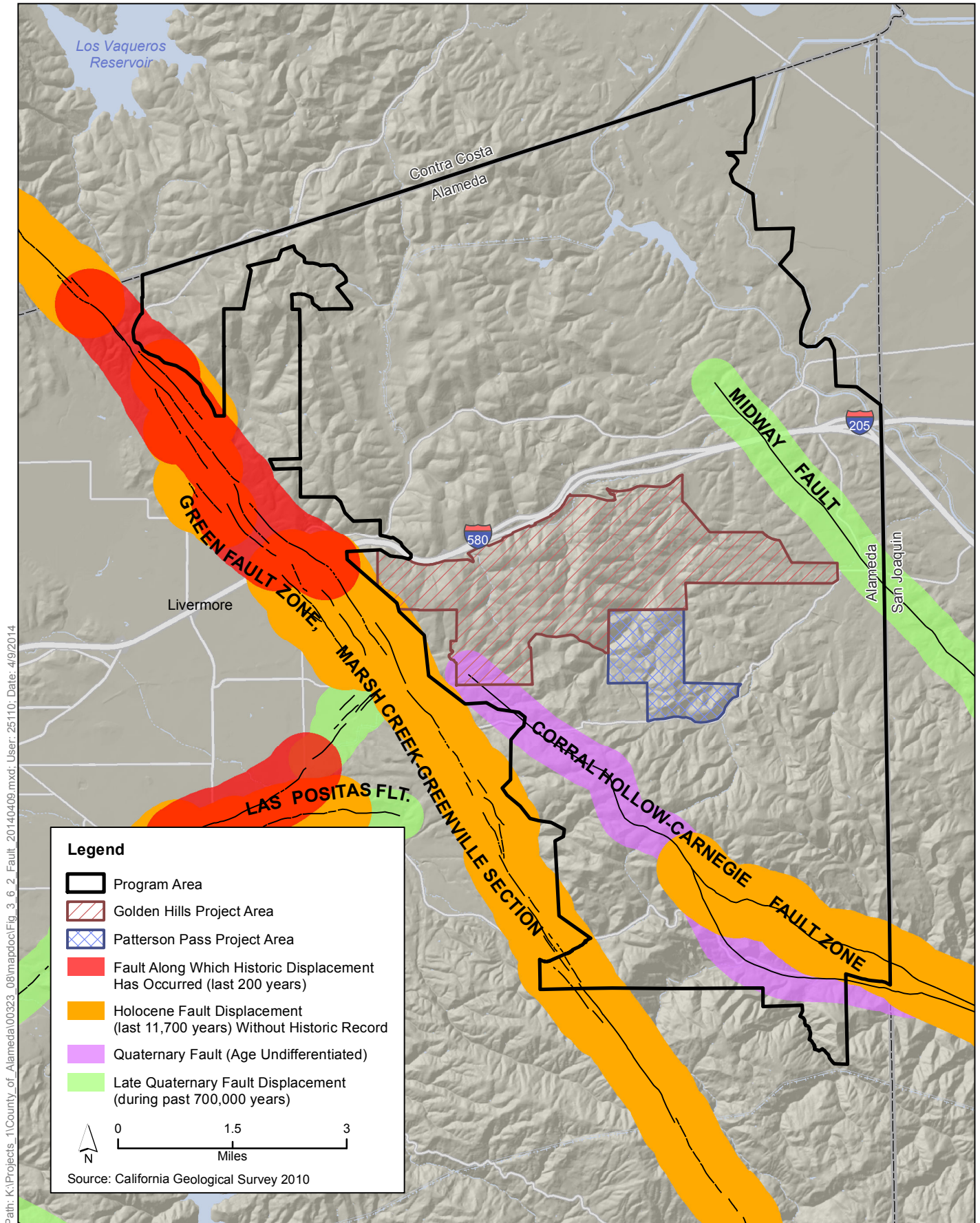
Graphics ... 00323.08 (2-21-2014)



Altamont Pass Wind Resource Area Repowering Program

Figure 3.6-1 Geology Map

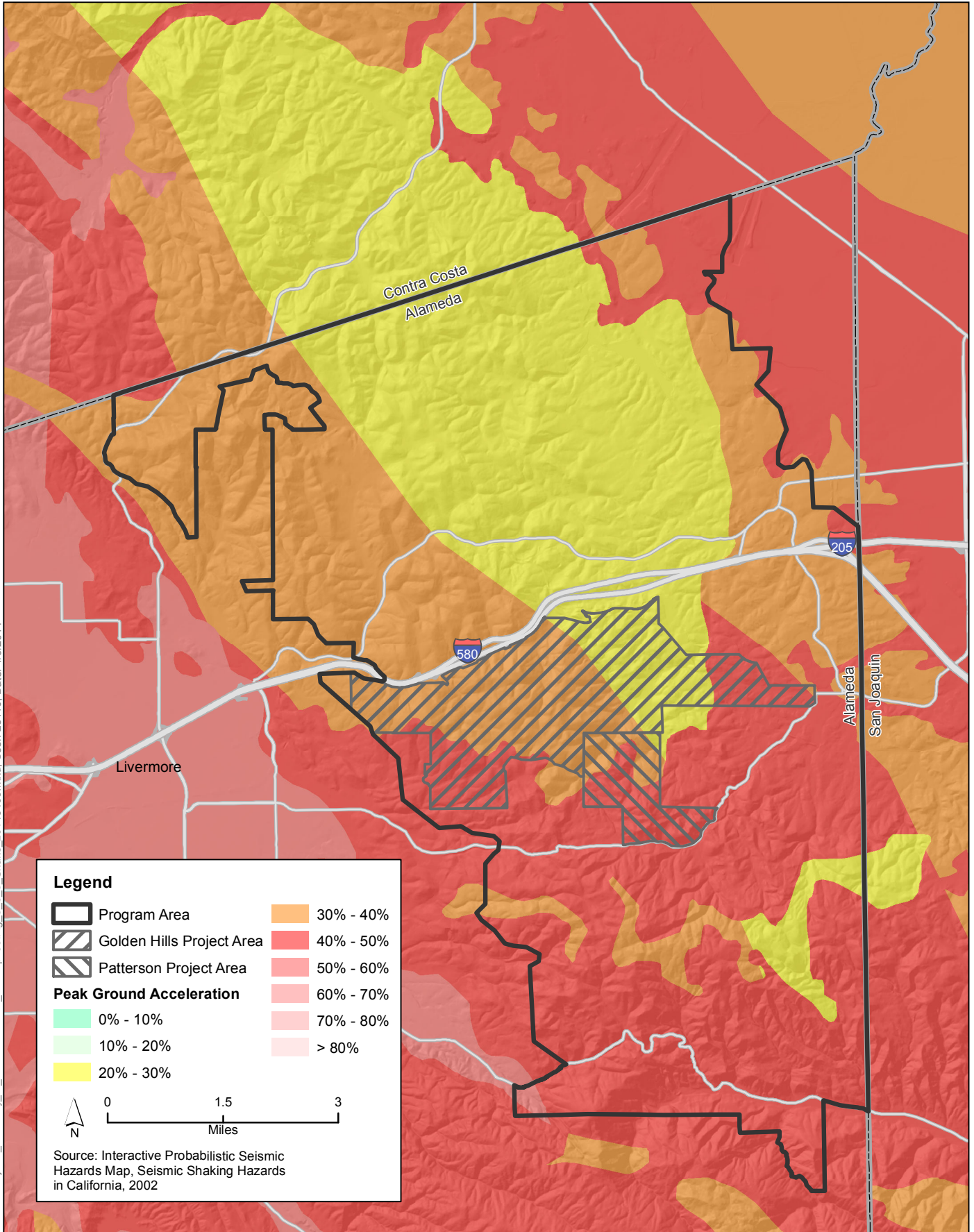




Path: K:\Projects\_1\County\_of\_Alameda\00323\_08\mapdoc\Fig\_3\_6\_2\_Fault\_20140409.mxd; User: 25110; Date: 4/9/2014

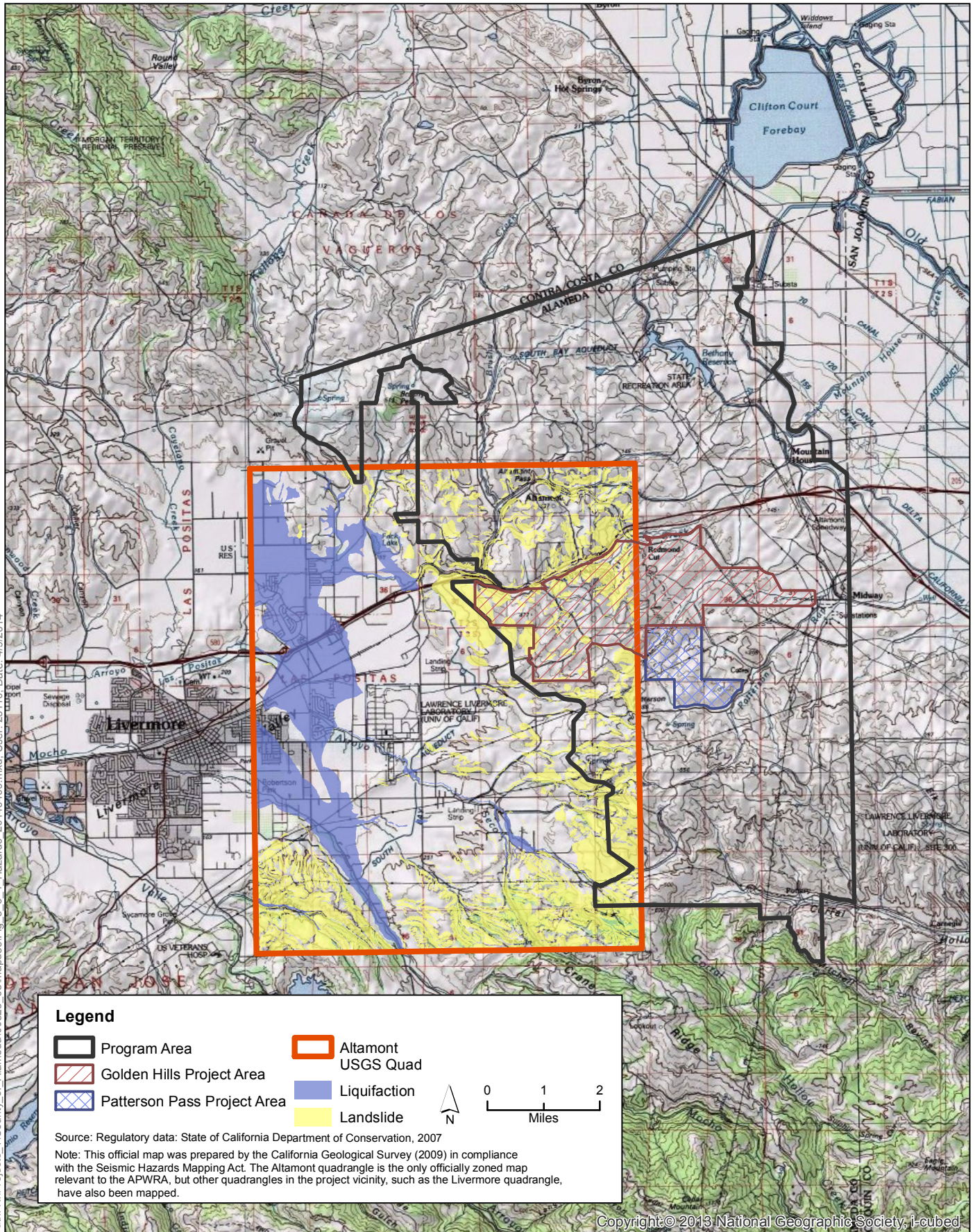


Path: K:\Projects\_1\County\_of\_Alameda\00323\_08\mapdoc\Fig\_3\_6\_3\_Shake\_20140409.mxd; User: 25110; Date: 4/9/2014





Path: K:\Projects\1\County of Alameda\00323\_08\mapdoc\Fig\_3\_6\_4\_Hazards\_2014\0409.mxd; User: 25110; Date: 4/9/2014



**Legend**

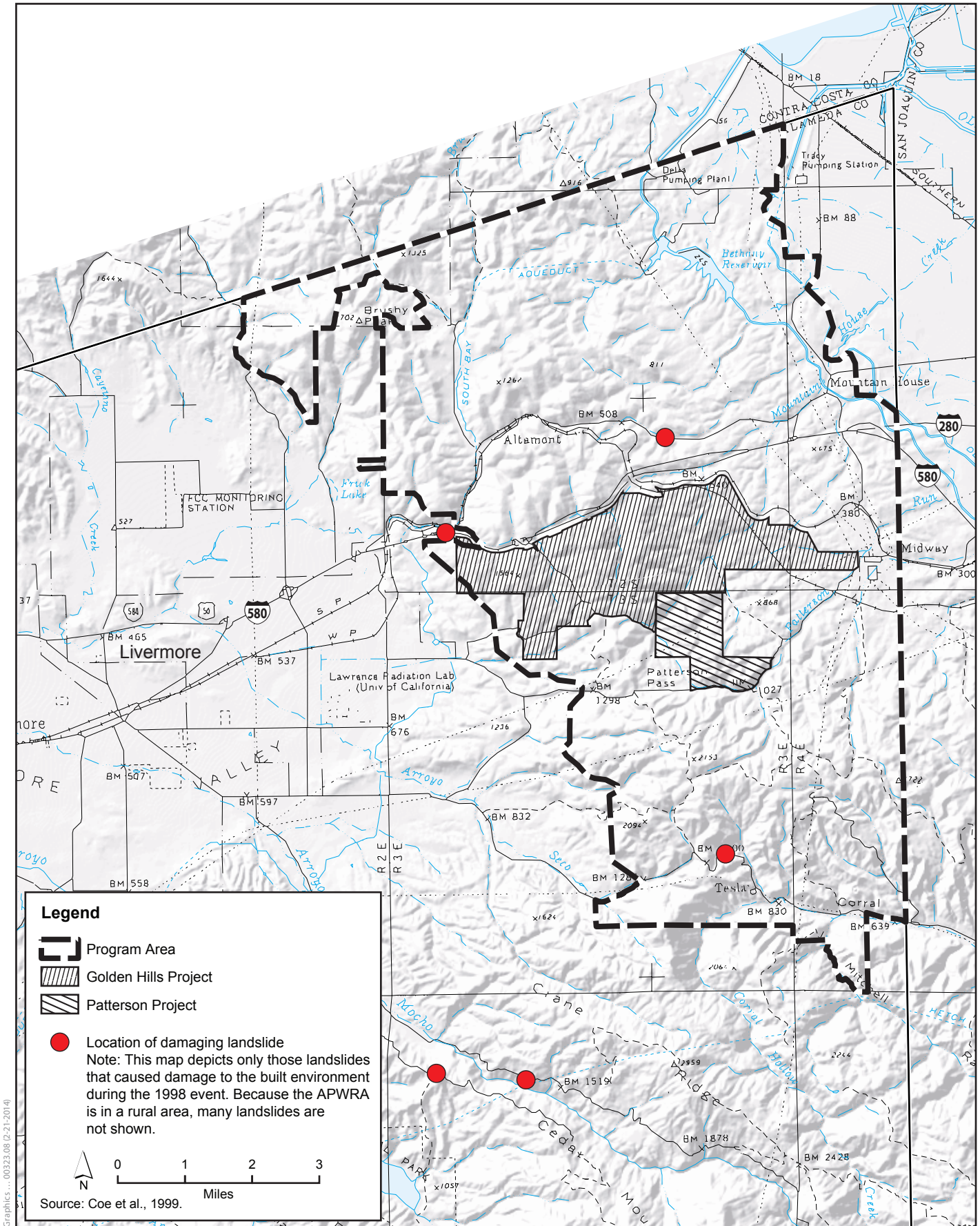
Program Area	Altamont USGS Quad
Golden Hills Project Area	Liquification
Patterson Pass Project Area	Landslide

Source: Regulatory data: State of California Department of Conservation, 2007  
 Note: This official map was prepared by the California Geological Survey (2009) in compliance with the Seismic Hazards Mapping Act. The Altamont quadrangle is the only officially zoned map relevant to the APWRA, but other quadrangles in the project vicinity, such as the Livermore quadrangle, have also been mapped.

Copyright © 2013 National Geographic Society, i-cubed





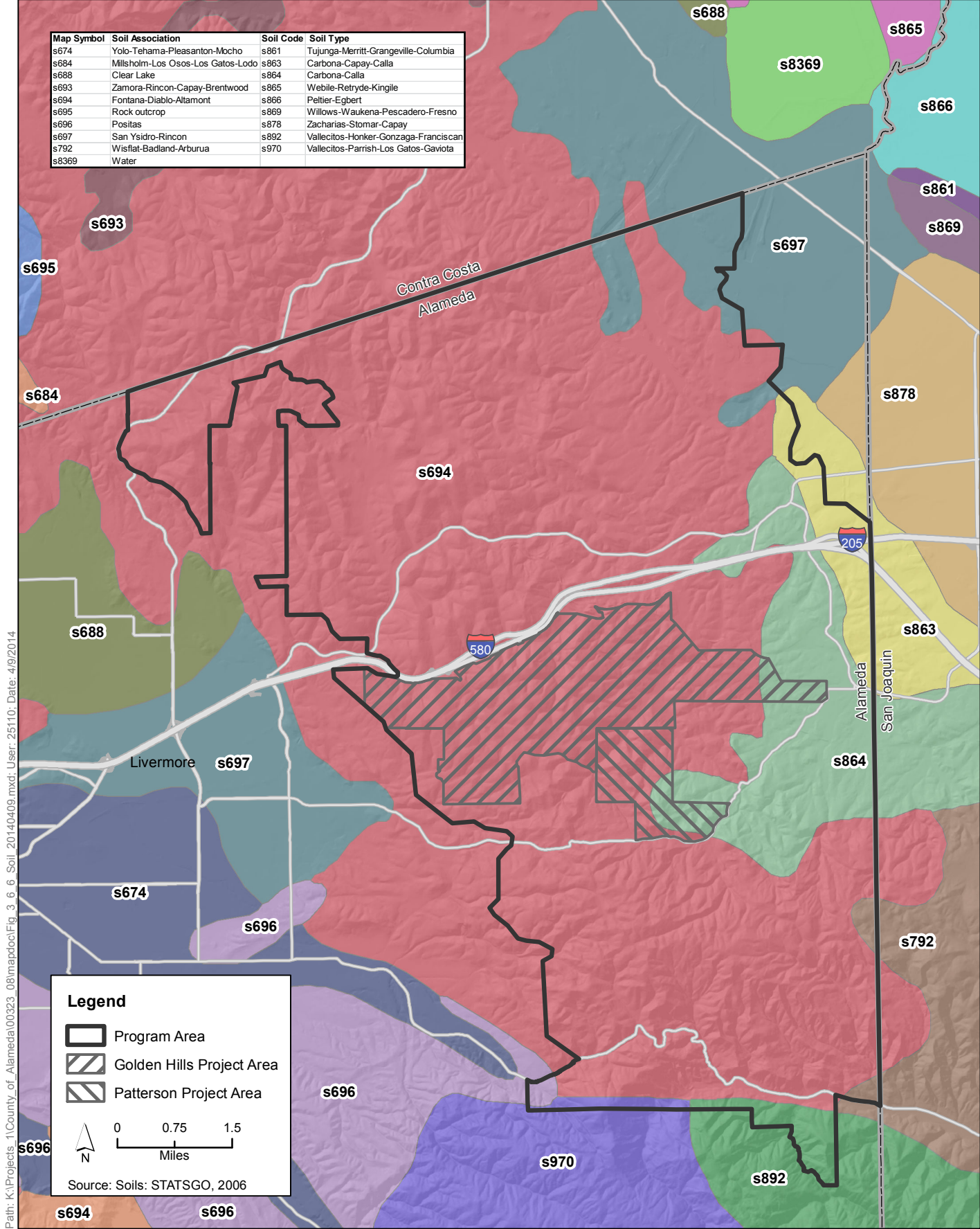


Graphics ... 00323.08 (2-21-2014)



**Figure 3.6-5**  
**Landslides Causing Damage to the**  
**Built Environment during Heavy Rain Event in 1998**





Path: K:\Projects\_1\County\_of\_Alameda\00323\_08\mapdoc\Fig\_3\_6\_6\_Soil\_20140409.mxd; User: 25110; Date: 4/9/2014

