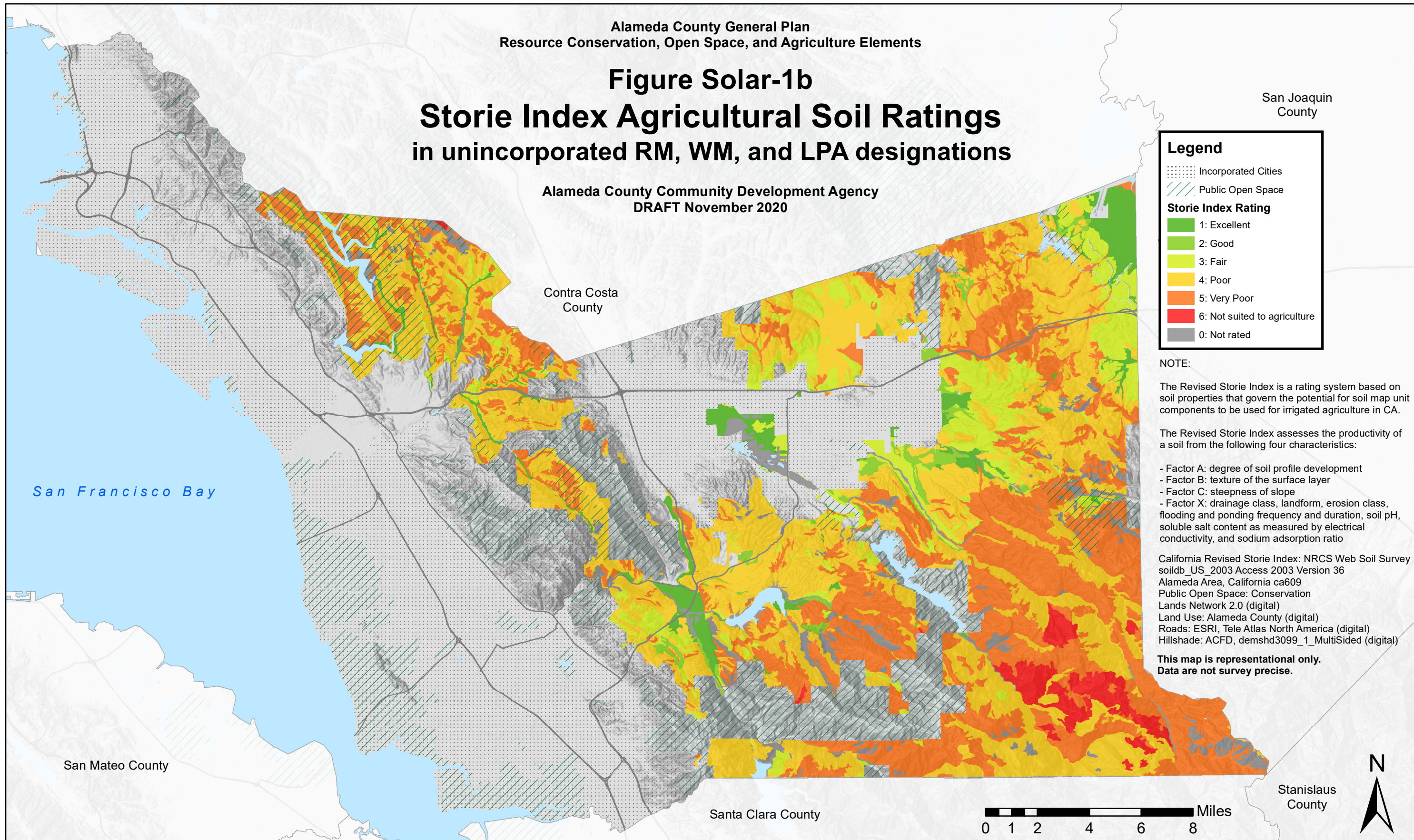


Figure Solar-1b Storie Index Agricultural Soil Ratings in unincorporated RM, WM, and LPA designations

Alameda County Community Development Agency
DRAFT November 2020



Legend

- Incorporated Cities
- Public Open Space

Storie Index Rating

- 1: Excellent
- 2: Good
- 3: Fair
- 4: Poor
- 5: Very Poor
- 6: Not suited to agriculture
- 0: Not rated

NOTE:

The Revised Storie Index is a rating system based on soil properties that govern the potential for soil map unit components to be used for irrigated agriculture in CA.

The Revised Storie Index assesses the productivity of a soil from the following four characteristics:

- Factor A: degree of soil profile development
- Factor B: texture of the surface layer
- Factor C: steepness of slope
- Factor X: drainage class, landform, erosion class, flooding and ponding frequency and duration, soil pH, soluble salt content as measured by electrical conductivity, and sodium adsorption ratio

California Revised Storie Index: NRCS Web Soil Survey soildb_US_2003 Access 2003 Version 36
Alameda Area, California ca609
Public Open Space: Conservation Lands Network 2.0 (digital)
Land Use: Alameda County (digital)
Roads: ESRI, Tele Atlas North America (digital)
Hillshade: ACFD, demshd3099_1_MultiSided (digital)

**This map is representational only.
Data are not survey precise.**

