



1. From east bank of Bethany Reservoir looking northwest.



2. From westbound I-580 looking southwest.

Graphics ... 00323,08 (7-18-2013)





3. From Patterson Pass Road looking east.

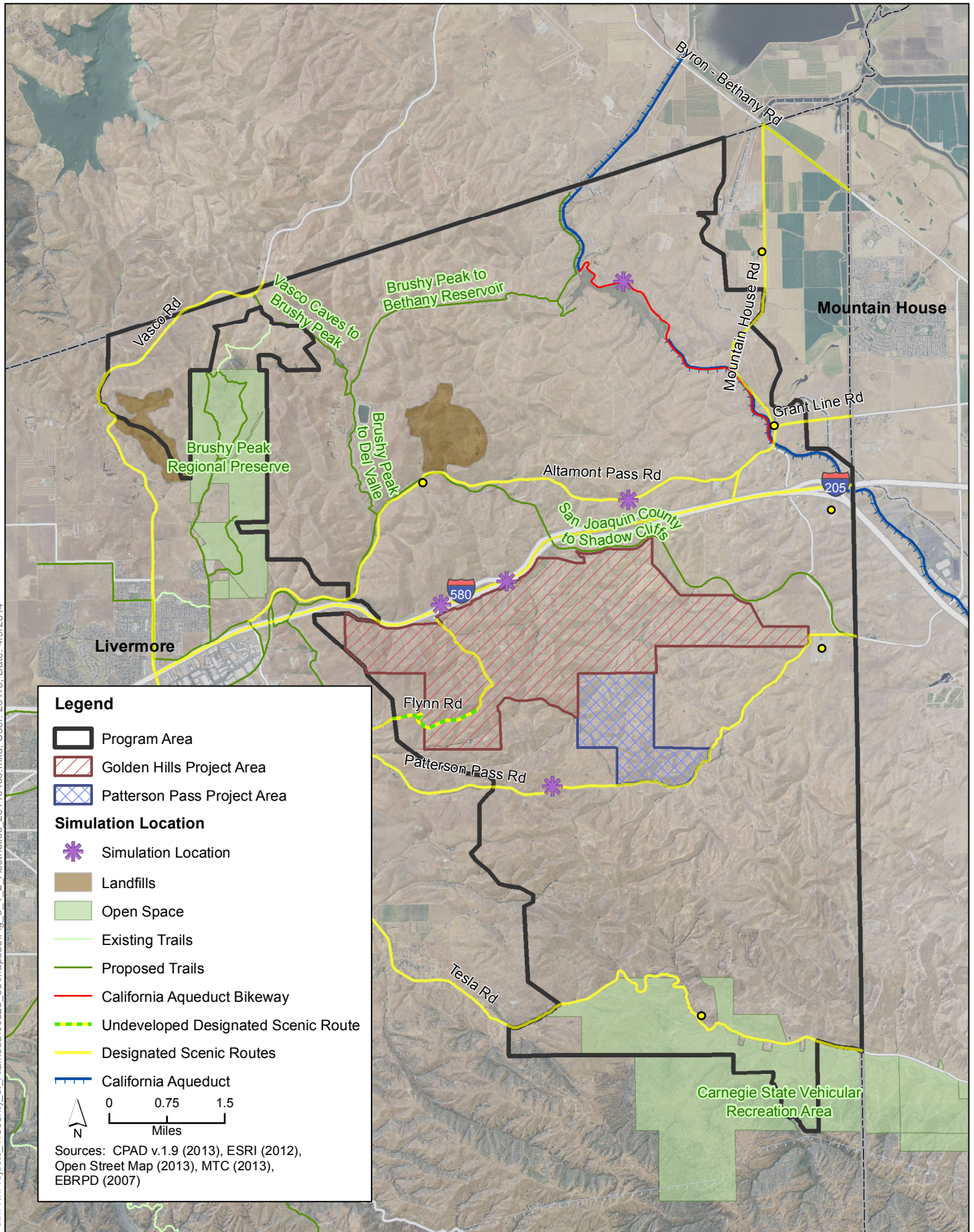


4. Midway Substation from Patterson Pass Road looking east.

Graphics ... 00323,08 (7-18-2013)



Path: K:\Projects_1\County of Alameda\00323_08\mapdoc\Fig_3_1_2_Aesthetics_20140409.mxd; User: 25110; Date: 4/9/2014



Existing View

Looking southwest from California Acqueduct Bikeway at Bethany Reservoir



Simulation: Alternative 1



Simulation: Alternative 2



Graphics ... 00323.08 (1-14-2014)



Existing View

Looking east from eastbound I-580,
1.23 miles east of the North Flynn Road overpass



Simulation: Alternative 1



Simulation: Alternative 2
(same as Alternative 1)



Graphics ... 00323.08 (1-8-2014)



Existing View

Looking southwest from westbound I-580,
0.32 mile east of the North Flynn Road overpass



Simulation: Alternative 1



Simulation: Alternative 2
(same as Alternative 1)



Graphics ... 00323.08 (1-9-2014)



Existing View

Looking east from Patterson Pass Road
at Patterson Pass



Simulation: Alternative 1



Simulation: Alternative 2



Graphics ... 00323.08 (1-13-2014)



Existing View

Looking west, Altamont Pass Road 1.6 miles west of Grant Line Road



Simulation: Alternative 1



Simulation: Alternative 2



Graphics ... 00323.08 (1-14-2014)

