

Eden Grown



Farming, gardening and ranching are an important part of the heritage of the Eden area and continue to contribute significantly to the County's environment, economy and community.

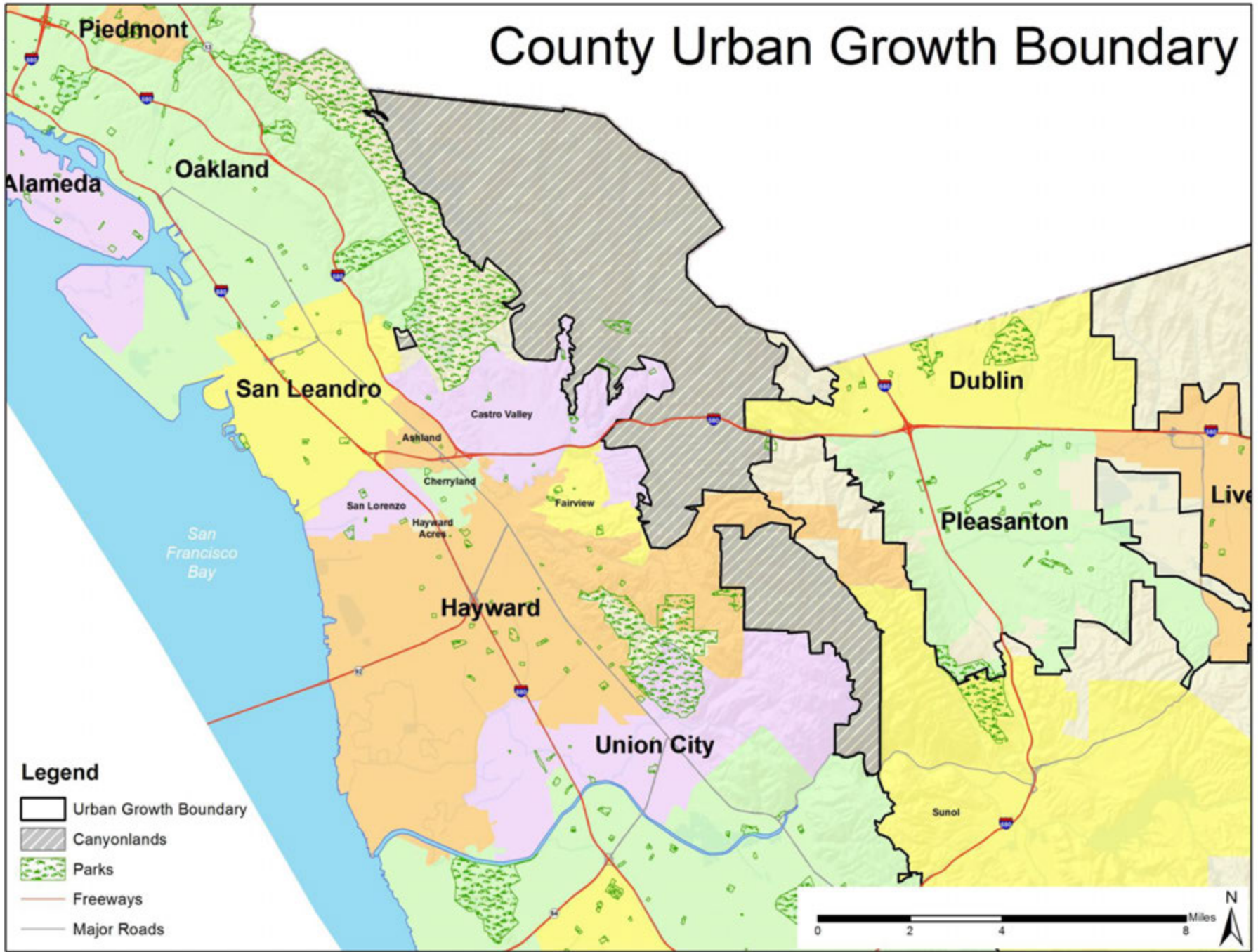
Various forms of agriculture have different needs that must be met with policies, programs and regulations to avoid negative impacts on agricultural operations. Public outreach, education and environmental stewardship will maintain agriculture in both urban and rural areas, while improving and strengthening the agricultural foundation of our community to provide a healthy environment.

We recognize the difference between open space and undeveloped agricultural lands and that both provide critical wildlife habitat and visual resources for the Eden Area.

Our goal is to foster and promote the positive impacts that strengthen the economic benefits and sustainability of agriculture. Through these efforts, the county will drive investments to enhance our communities, improve the environment and contribute to the value of important open space.

All wealth comes from the land.

County Urban Growth Boundary



All wealth comes from the land

Goal #1: Identify, promote, and protect Eden Area's unique agricultural potential

Goal #2: Provide educational opportunities in the school system and surrounding community about agriculture (farming, ranching, and equestrian) while seeking park and open space opportunities in the urban built out environment.

Goal #3: Environmental issues from climate change to water conservation and energy efficiency impact our health and wellbeing and should have priority.

Goal #1: Identify, promote, and protect Eden Area's unique agricultural potential

Highlight the rich agricultural heritage of Alameda County and educate the community around the importance of preserving the rich tradition and values of the urban, rural, and agricultural areas of the unincorporated areas



Eden Grown

Use social media to encourage community participation.

Consider how to increase safe environments for wildlife.



Eden Grown

Strengthen participation in, and the knowledge and impact of agriculture related advisory bodies including the Agriculture Advisory Committee and the District 4 Agricultural Issue Forum



Eden Grown

Educate users, policy makers, engineers, and community about rural issues including roads, ranching, farming, and livestock.



Eden Grown

Support family owned ranches and farms, community-owned and operated community gardens and urban farms, and the growing and promotion of local foods, urban farming, and the promotion of local food.



Eden Grown

Provide educational opportunities for growing, preparing, and selling local food products including cottage food products.



Eden Grown

Develop the County Fairgrounds and Rowell Ranch into year-round entertainment centers that showcase agricultural activities.



All wealth comes from the land

Goal #1: Identify, promote, and protect Eden Area's unique agricultural potential.

Goal #2: Provide educational opportunities in the school system and surrounding community about agriculture (farming, ranching, and equestrian) while seeking park and open space opportunities in the urban built out environment.

Goal #3: Environmental issues from climate change to water conservation and energy efficiency impact our health and wellbeing and should have priority.

Goal #2: Provide educational opportunities in the school system and surrounding community about agriculture (farming, ranching, and equestrian) while seeking park and open space opportunities in the urban built out environment.



All wealth comes from the land

Provide training opportunities to spur job growth in the environmental and sustainable agriculture sector.



All wealth comes from the land

Expand the FFA and 4H into urban communities.

Share Alameda County Crops production report in the High Schools (Grapes, Cows, Horses).



All wealth comes from the land

Create coordination between county agencies, community based organizations, and non-governmental organizations



All wealth comes from the land



All wealth comes from the land

Develop large central plazas in the downtown areas as focal points for the community



All wealth comes from the land

Increase coordination between schools, agriculture, ranches for work opportunities where students receive credit, training, and certification.



All wealth comes from the land

Improve and upgrade local parks such as Cull Canyon Lake.



All wealth comes from the land

Advocate for infill and pocket parks.

Develop the lots/land on Hacienda & Via Toledo, Daughtery's, Mission & Mattox, and San Lorenzo Village into parks.



All wealth comes from the land

Goal #1: Identify, promote, and protect Eden Area's unique agricultural potential.

Goal #2: Provide educational opportunities in the school system and surrounding community about agriculture (farming, ranching, and equestrian) while seeking park and open space opportunities in the urban built out environment.

Goal #3: Environmental issues from climate change to water conservation and energy efficiency impact our health and wellbeing and should have priority.

Goal #3: Environmental issues from climate change to water conservation and energy efficiency impact our health and wellbeing and should have priority.

Evaluate and restore, where feasible, native creek environments and reservoirs.

Advocate for the completion of the Resource Conservation, Open Space, and Agriculture (ROSA) Element.



All wealth comes from the land

Form an ongoing local citizen advisory group to educate and advocate the community and local government on environmental and landscaping practices in our areas such as irrigation, pruning, and plant choices



All wealth comes from the land

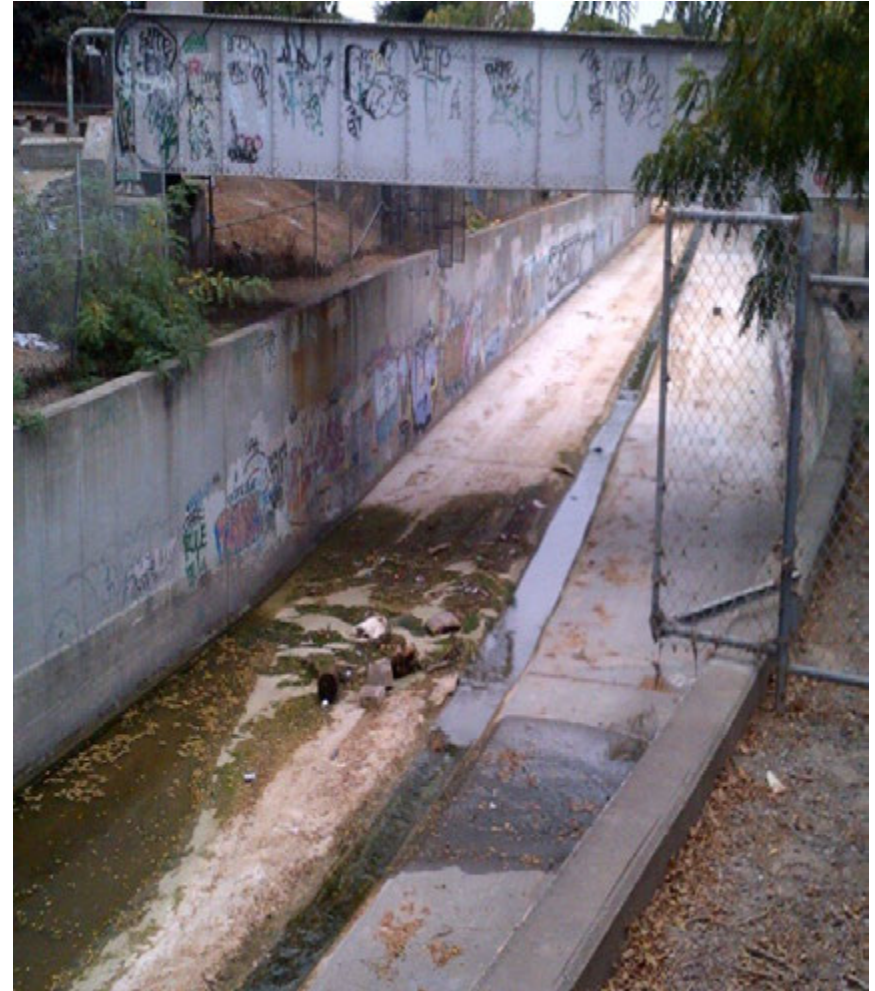
Provide funding and support to community and school groups that will provide environmental stewardship.



All wealth comes from the land

Promote more clean ups of roads, parks, and creeks.

Develop guidelines and encourage flexibility for public and private property owners to clean the creeks all year long.



All wealth comes from the land

Evaluate and enforce existing ordinances, and where necessary develop or provide additional rules and regulations around environmental standards to ensure that the creeks are clean

Prioritize the implementation of recommendations of the Climate Action Plan



All wealth comes from the land

Goal #1: Identify, promote, and protect Eden Area's unique agricultural potential

Goal #2: Provide educational opportunities in the school system and surrounding community about agriculture (farming, ranching, and equestrian) while seeking park and open space opportunities in the urban built out environment.

Goal #3: Environmental issues from climate change to water conservation and energy efficiency impact our health and wellbeing and should have priority.