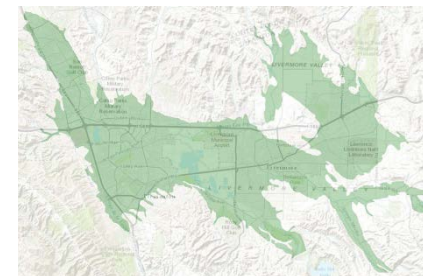




Drinking water  
for over  
220,000 people

Groundwater  
basin manager  
for over  
50 Years



# Zone 7 – An Overview

LAFCo Meeting, March 13, 2014



Regional Flood  
Protection For  
Eastern Alameda  
County

Irrigation for  
viticulture  
and  
landscaping





# Zone 7 Water Agency Functions

- Flood protection for Eastern Alameda County (425 square miles)
- State Water Project Contractor, importing an average of 48,000 AFA to Valley; remaining demands met with local supplies
- Treated water wholesaler (45,000 AFA) for over 220,000 residents and businesses served by:
  - City of Livermore
  - California Water Service Company (portion of Livermore)
  - City of Pleasanton
  - Dublin San Ramon Services District (including Dougherty Valley under special agreement)
- Untreated water supplier (5,000 AFA) for:
  - 74 agricultural & irrigation customers (3500 acres)
  - Primarily vineyards
  - Local wine industry estimated at \$200 million/year
- Groundwater Basin Manager
  - 250,000 AF underground basin with 126,000 AF operational storage



# Integrated goals & operations

Solar Panels at DVWTP; Lawn Replacement Program



Removed Castlewood Grade Control Structure



WATER SUPPLY

FLOOD PROTECTION

WATER QUALITY

GROUNDWATER MANAGEMENT

STREAM MANAGEMENT



Extensive Salt Management Plan that includes well monitoring & demineralization



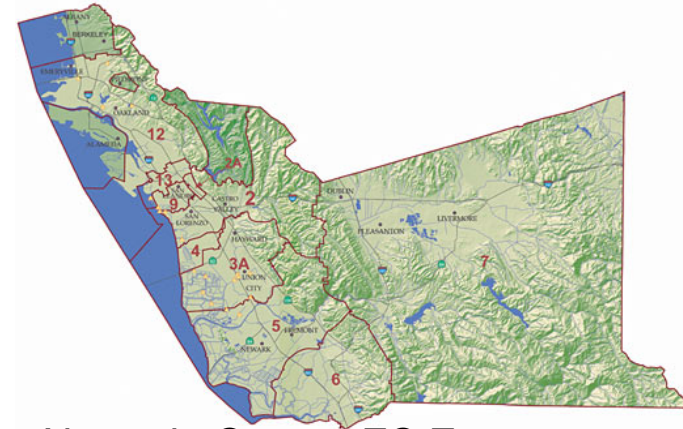
Restored Stanley reach of Arroyo Mocho





# Authority & Funding

- Dependent Special District under Alameda County
- Governed by a locally-elected seven-member board
- Enabling legislation in Water Code
  
- Water funding sources include:
  - property taxes (*SWP fixed charges*)
  - water rates (*O&M*)
  - new development connection fees (*expansion*)
- Flood Protection funding sources include:
  - property taxes (*O&M*)
  - new development impact fees (*expansion*)

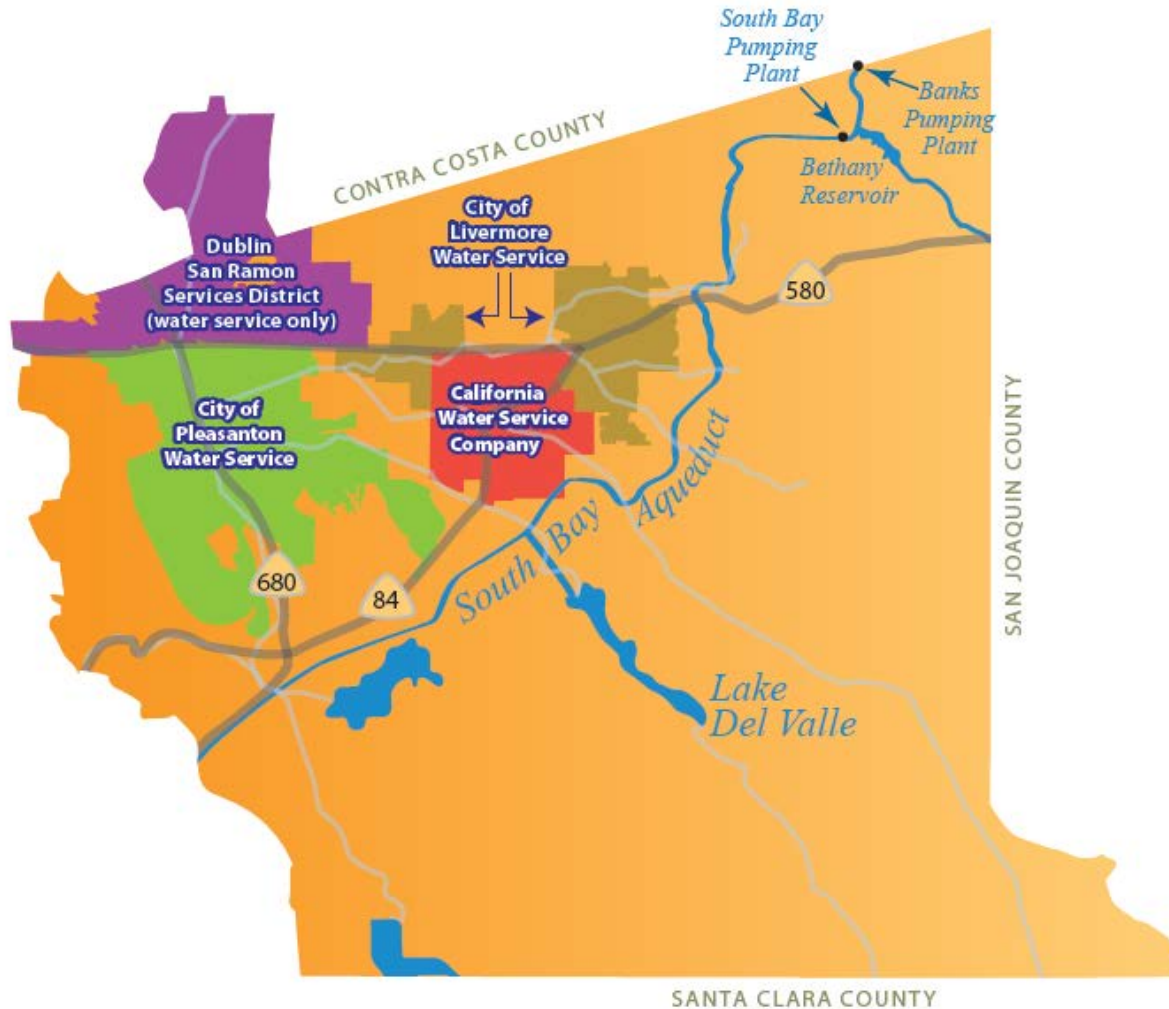


Alameda County FC Zones

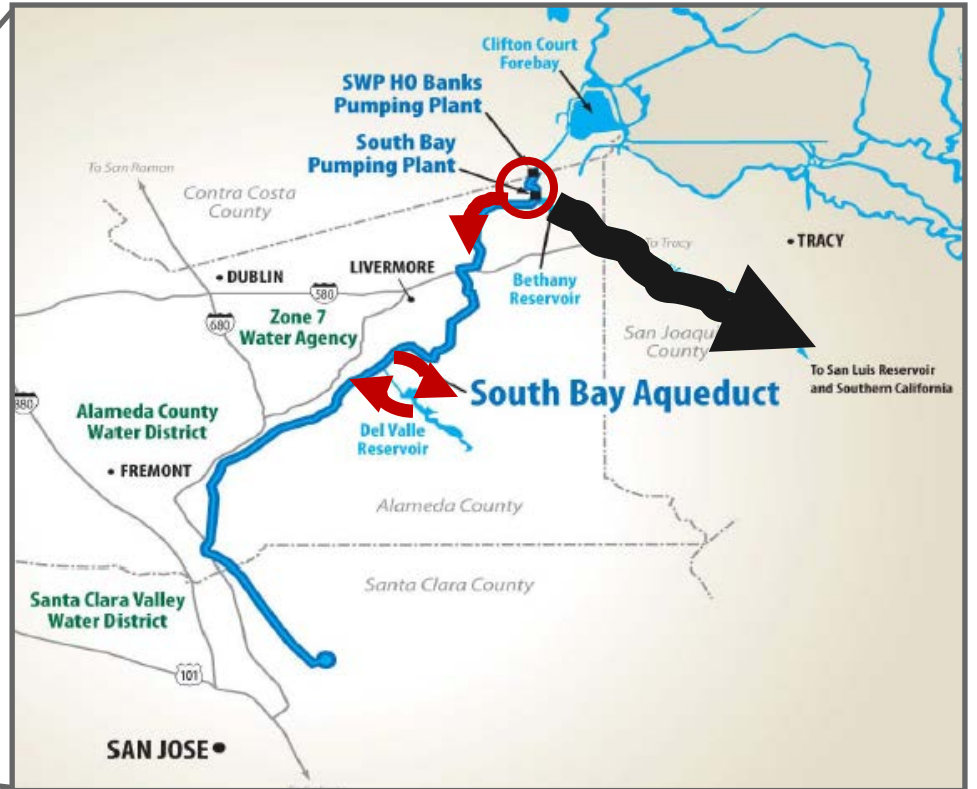
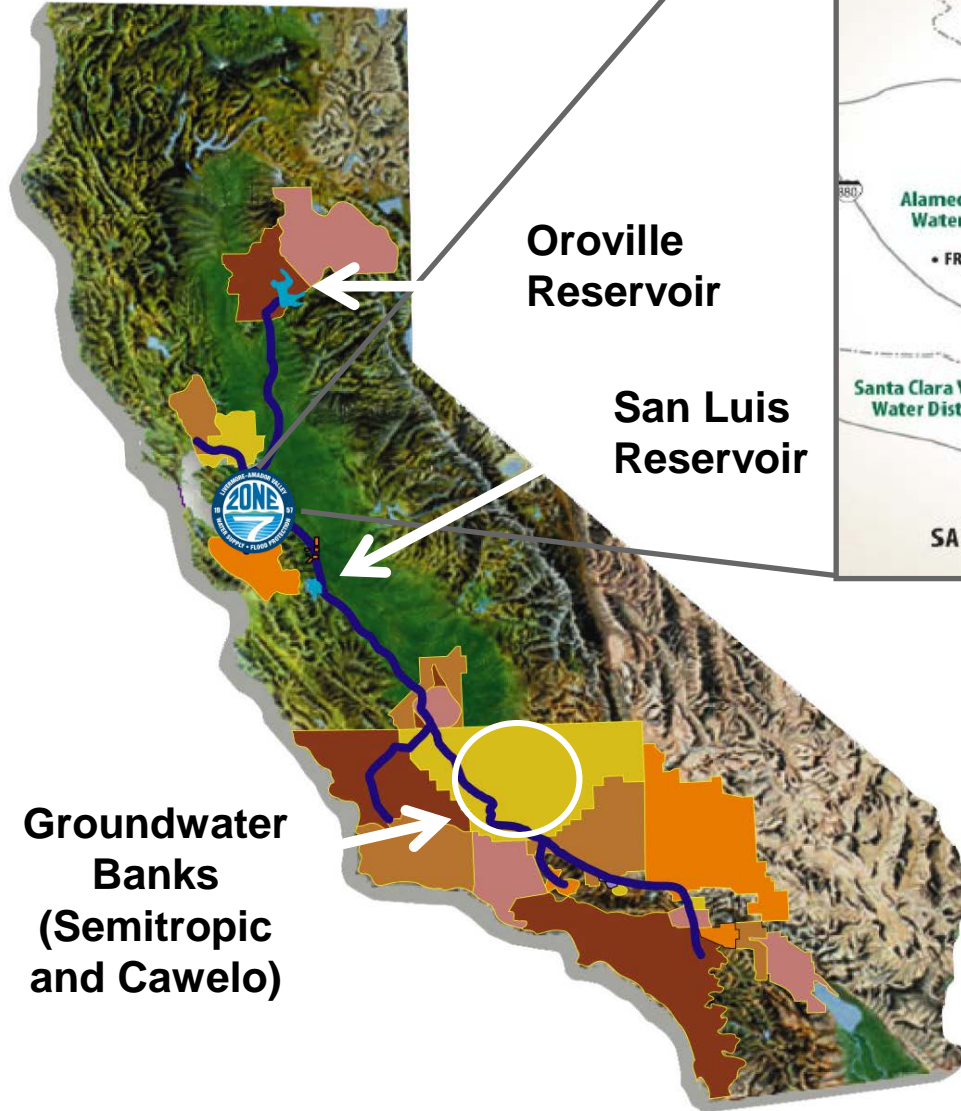


Livermore, early 1900s

# WHOLESALE WATER SUPPLY: Retail Service Areas



# STATE WATER PROJECT, OVER 80% OF Zone 7's Water Supply



- All of Zone 7's Imported Supplies are delivered through the Delta/SBA System:
- Table A
  - Carryover
  - Dry Year Transfers
  - SWP Exchanges
    - Multi-Year Pool
    - Semitropic & Cawelo
  - BBID

# Lake Del Valle, State Water Project facility

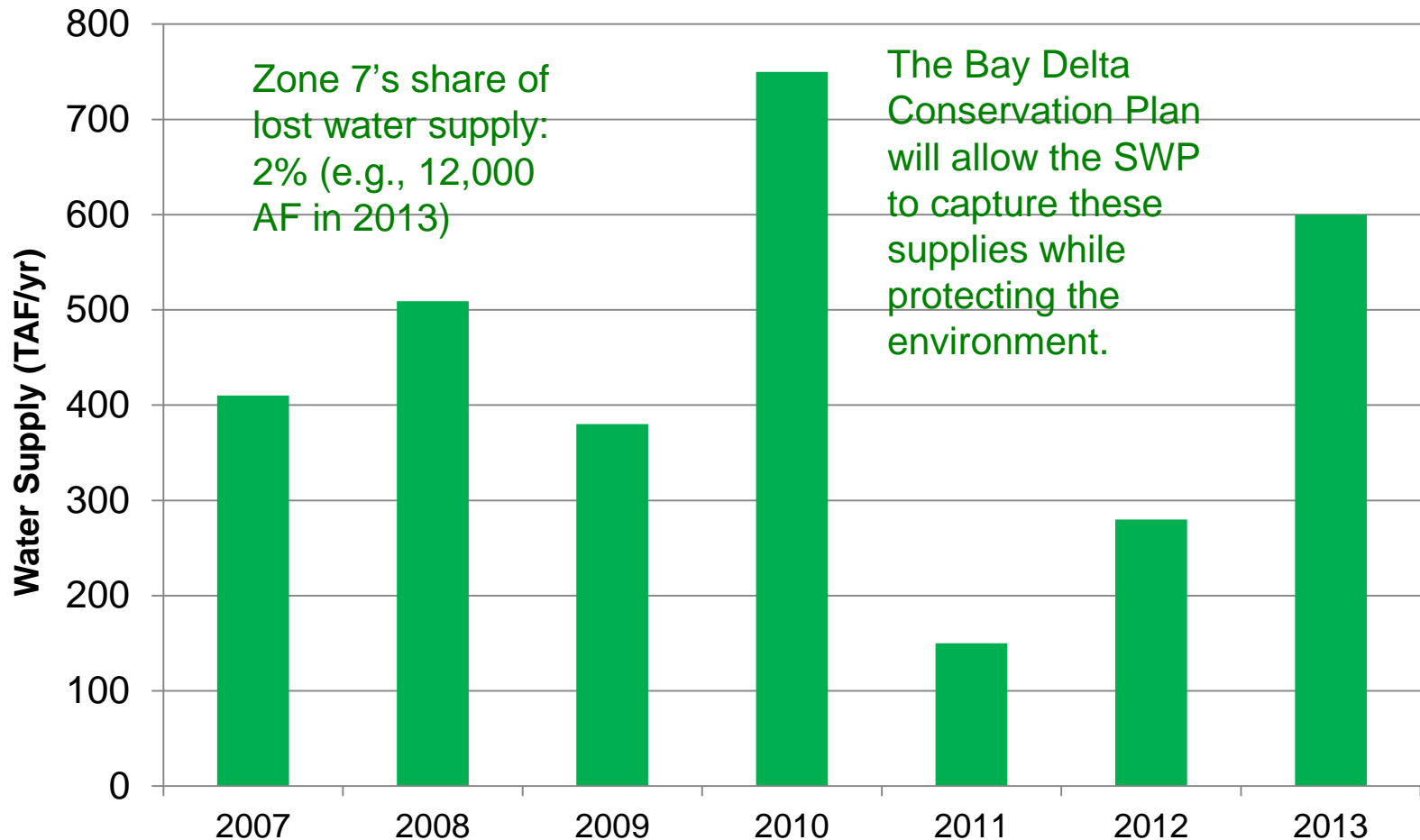


- Built in 1968, SE of Livermore
- Max storage capacity: 77,000 acre-feet
- Reservoir providing water storage, flood protection, fish & wildlife enhancement
  - EB Regional Park District manages recreation
- Some SWP water stored for Zone 7, ACWD, SCVWD (SBA contractors)
- Zone 7 & ACWD also use some storage capacity to capture local rain runoff
- Zone 7 owns and manages large portion of watershed (former Patterson Ranch)

# Impacts of Delta Pumping Regulations



SWP Water Supply Lost Due to Delta Fisheries Protection: 4 to 18% of maximum Table A (4,200 TAF)



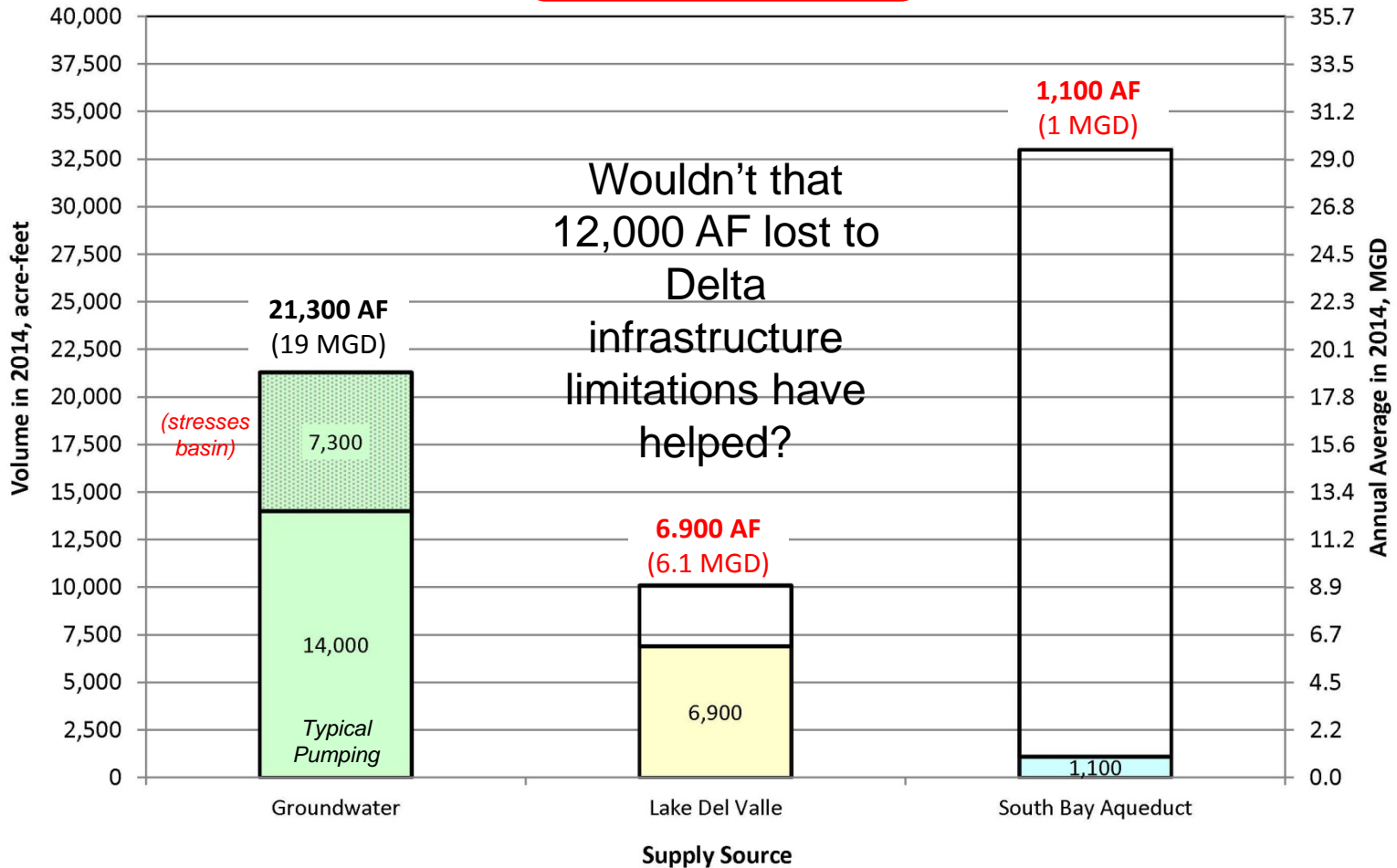


# 2014 Drought Outlook: Worst-Case Scenario



**29,300 AF (26.1 MGD)**  
*[potential worst-case]*

A potential 54%  
reduction!





# 2014 Drought Response Plan Conservation Plus!

## Supply Opportunity

## Action

## Timeline

### Groundwater Basin

- New well: COL #5
- New well: Valley Avenue Well (Busch Well #1)
- Additional retailer pumping
- Additional agricultural pumping
- Drought pumping optimization and monitoring plan

Online in 8/2014  
 Online in 2/2015  
 As-Needed  
 As-Needed  
 Ongoing throughout 2014 & 2015

### Lake Del Valle

- Fill lake with SWP water while available
- Exchange opportunities with other SBA Contractors
- Feasibility of accessing dead storage

Ongoing throughout  
 2014 & 2015

### South Bay Aqueduct

- Negotiate at State level to maximize available supply
- Coordinate with State Water Contractors
- Communicate Zone 7 needs/risks to DWR & State

Ongoing throughout  
 2014 & 2015

### Chain of Lakes

- Expedite recharge - install Lake I/Cope Lake intertie
- Capture all groundwater exports from gravel companies
- Feasibility of a package water treatment plant at lakes

Online in 5/2014  
 Ongoing throughout  
 2014 & 2015  
 Evaluation completed by Summer  
 2014

### Emergency Interties

- EBMUD: facilitate transfers to DSRSD that may be available
- SFPUC: facilitate transfers to Livermore that may be available
- Begin work on larger intertie with EBMUD &/or SFPUC

Ongoing throughout  
 2014 & 2015



# The Valley's Economic Lifeline (South Bay Aqueduct at Tesla Rd)





For more information, visit  
[www.Zone7water.com](http://www.Zone7water.com)

# The five Stages of Losing your Lawn

Joe Heller © 2012 GREEN BAY PRESS © 12

