

# COMMUNITY MEETING

## *Foothill Boulevard Improvements from 150<sup>th</sup> Avenue to the Vicinity of 164<sup>th</sup> /Miramar Avenue*

Alameda County Public Works Agency

April 9, 2014

7:30 pm – Presentation



Public Works Agency  
— Alameda County —



# WELCOME

*James Chu – Alameda County Public Works Agency  
Bond Ng – Alameda County Public Works Agency*

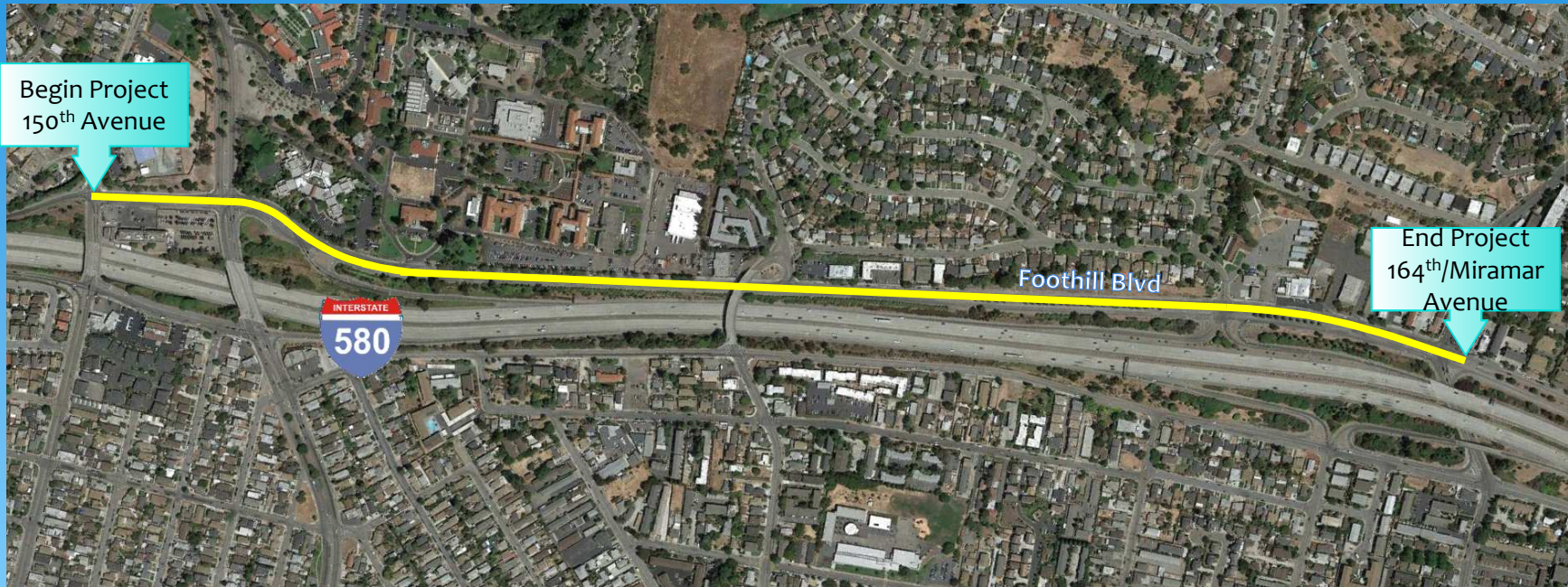


Public Works Agency  
— Alameda County —

*Foothill Blvd Improvements – from 150<sup>th</sup> Ave to the Vicinity of 164<sup>th</sup> /Miramar Ave*



# Project Location



- 150<sup>th</sup> Ave to 164<sup>th</sup>/Miramar Ave
- 6,100 feet (1.2 miles) in length



Public Works Agency  
— Alameda County —

**Foothill Blvd Improvements – from 150<sup>th</sup> Ave to the Vicinity of 164<sup>th</sup> /Miramar Ave**

# Purpose & Goals

## § Purpose

- Improve motorist, bicyclist, & pedestrian safety

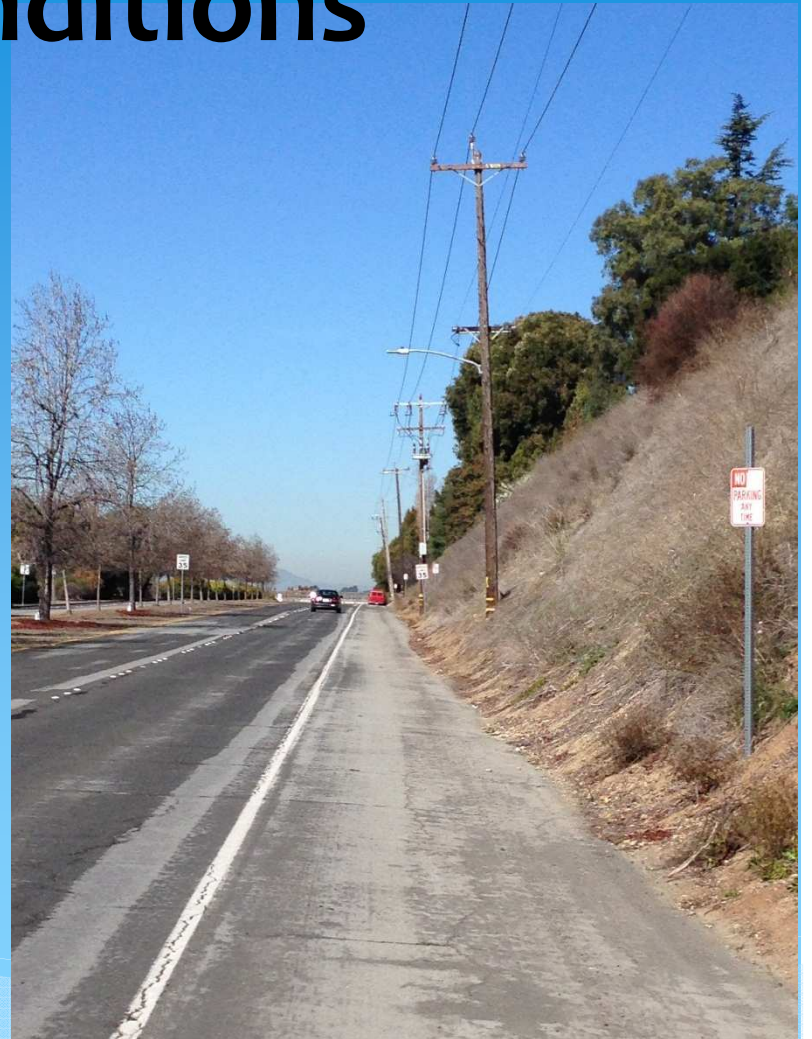
## § Goals

- Provide bicycle & pedestrian access



# Existing Conditions

- Four lanes (two in each direction)
- Current ADT– 4,300 vehicles per day
- No sidewalks north of Carolyn Street
- Deteriorated Roadway Pavement



Public Works Agency  
— Alameda County —

*Foothill Blvd Improvements – from 150<sup>th</sup> Ave to the Vicinity of 164<sup>th</sup> /Miramar Ave*

# Proposed Improvements

- **Class II On-street Bicycle Lanes (Striping & Signing)**
- **New Concrete Sidewalk, Curb & Gutter**
- **Re-stripe Foothill Blvd from four travel lanes to two travel lanes**
- **Resurface Pavement**



# Proposed Improvements



## “GREEN” Class II On-street Bicycle Lanes



Public Works Agency  
— Alameda County —

Foothill Blvd Improvements – from 150<sup>th</sup> Ave to the Vicinity of 164<sup>th</sup> /Miramar Ave

# Proposed Improvements



## “GREEN” Class II On-street Bicycle Lanes



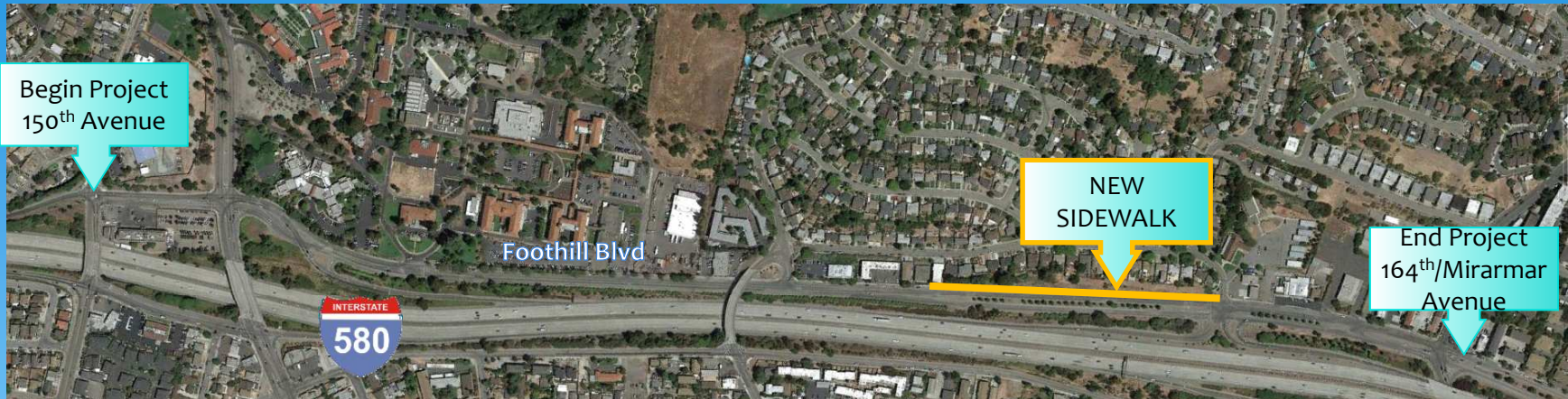
Public Works Agency  
— Alameda County —

*Foothill Blvd Improvements – from 150<sup>th</sup> Ave to the Vicinity of 164<sup>th</sup> /Miramar Ave*





# New Sidewalk Location



- Adjacent to East Hillside
- 1,300 feet (.25 miles) in length



Public Works Agency  
— Alameda County —

**Foothill Blvd Improvements – from 150<sup>th</sup> Ave to the Vicinity of 164<sup>th</sup> /Miramar Ave**

# Proposed Improvements

- **Re-stripe Foothill Blvd from four travel lanes to two travel lanes**
- **Resurface Pavement**

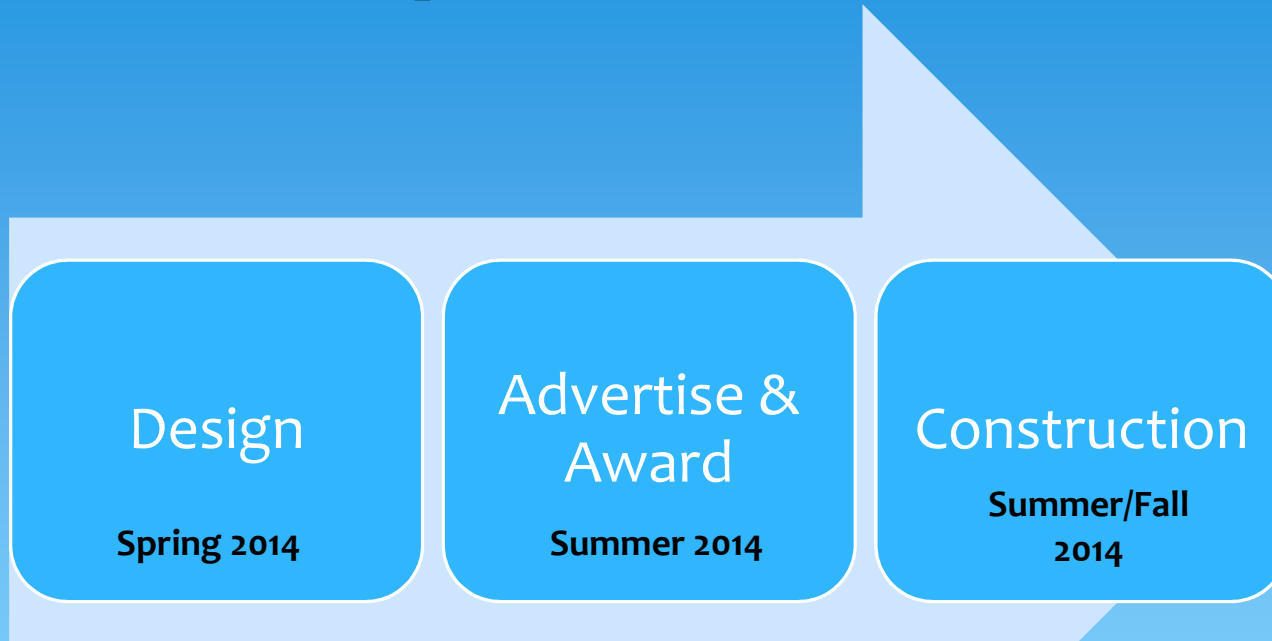


# Construction

- **Traffic Delays** – expected during construction
- **Intermittent Lane Closures** – required to complete construction
- **No Parking during construction** – required to complete construction
- **Access to property shall be maintained during construction** – except for a limited time during sidewalk & pavement resurfacing work



# Anticipated Schedule



# Project Benefits

Improves  
Safety

Improves  
Access



# Project Information & Contact Information

## Online:

- *Project Information will be posted online at [www.ACPWA.org](http://www.ACPWA.org)*

## County Staff:

- *Bond Ng (510-670-5785) or email: [bond@acpwa.org](mailto:bond@acpwa.org)*



# Questions and Answers



Public Works Agency  
— Alameda County —

***Foothill Blvd Improvements – from 150<sup>th</sup> Ave to the Vicinity of 164<sup>th</sup> /Miramar Ave***